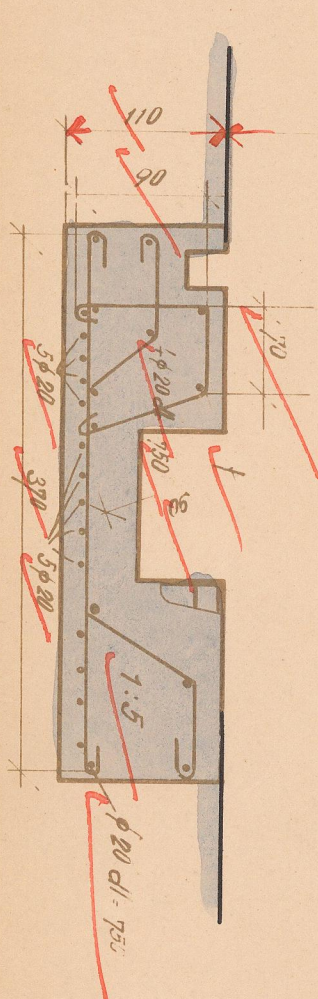
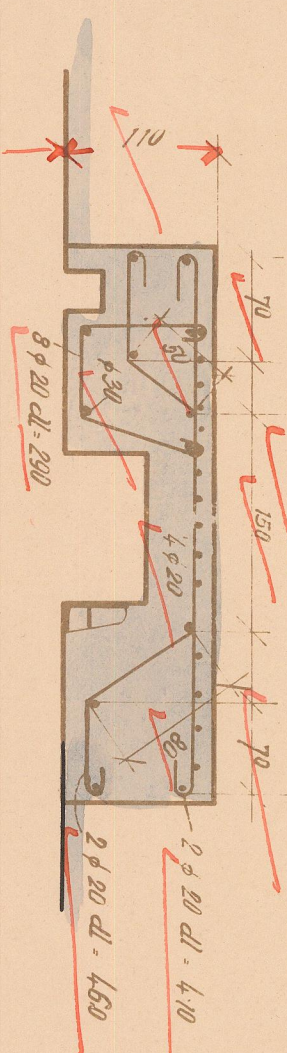
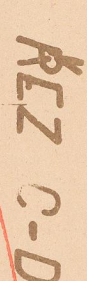
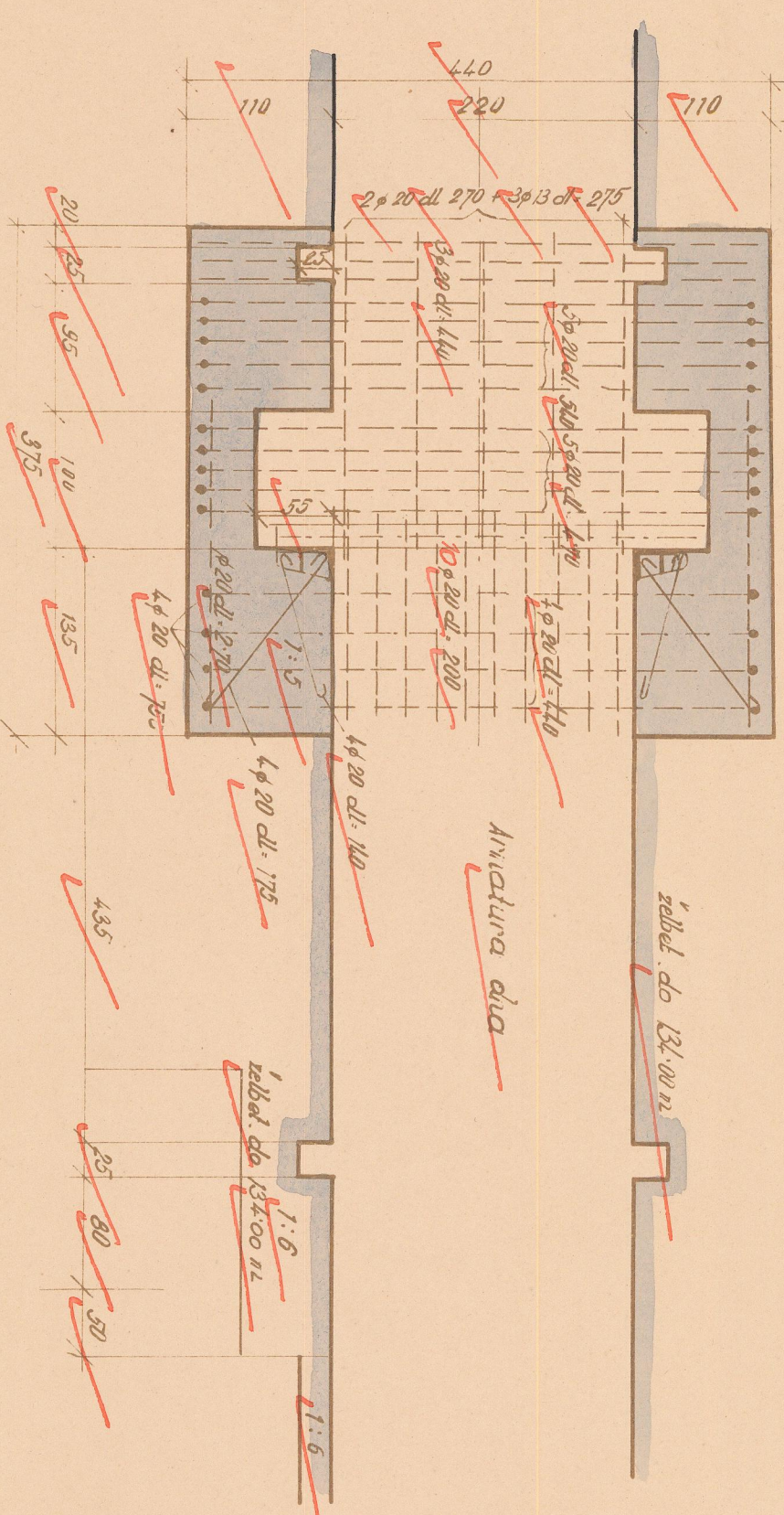
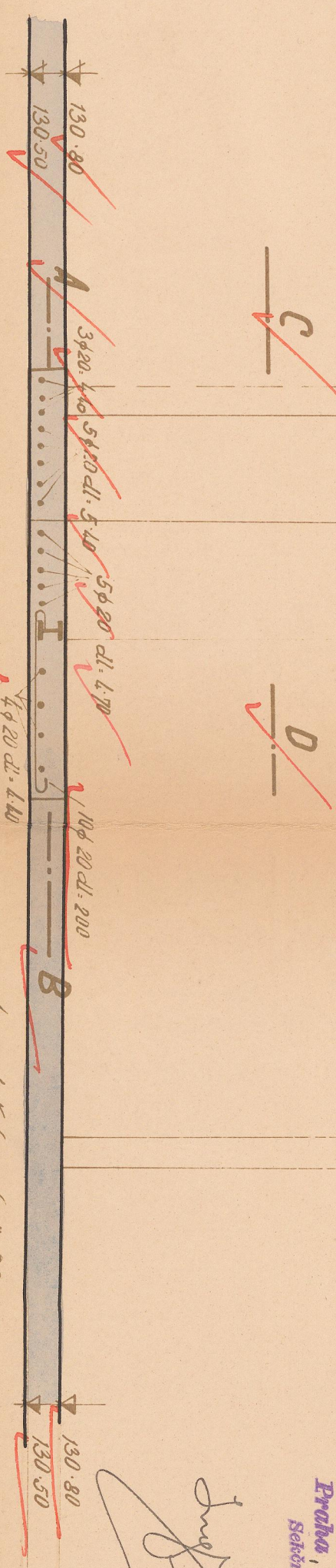
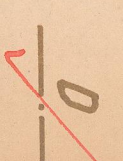
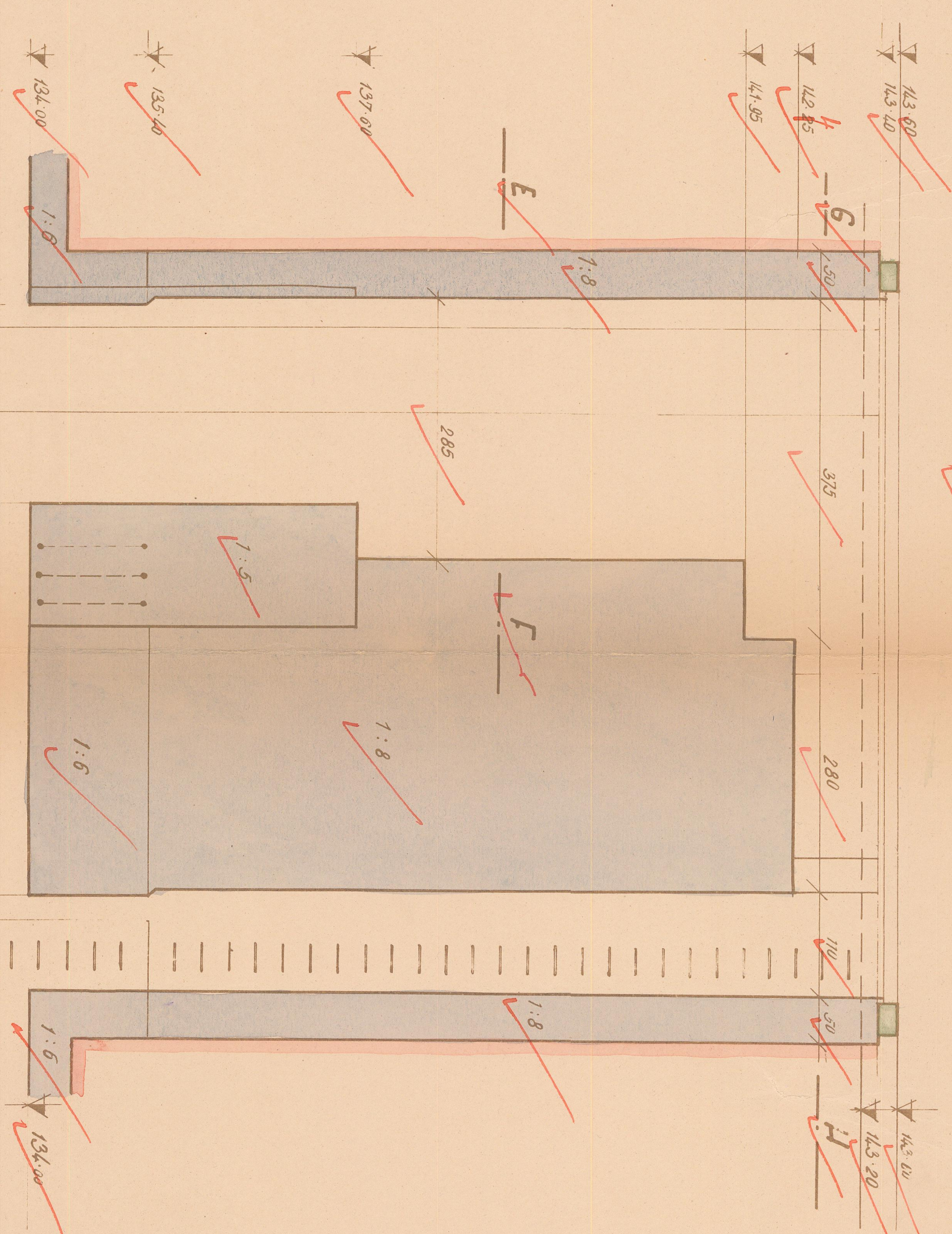
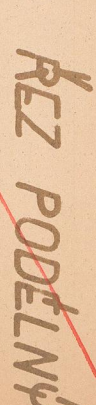
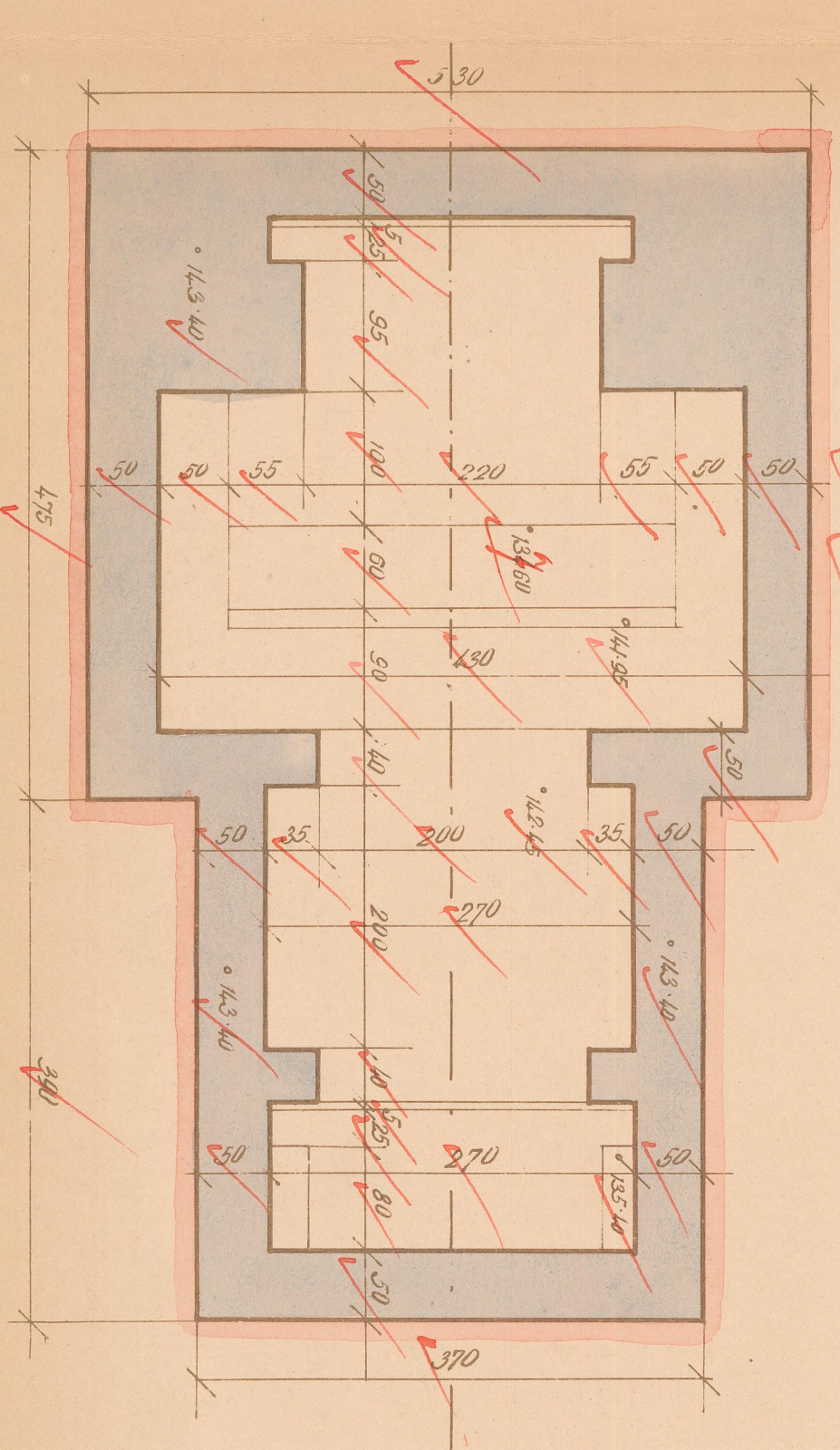
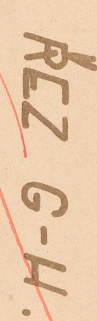
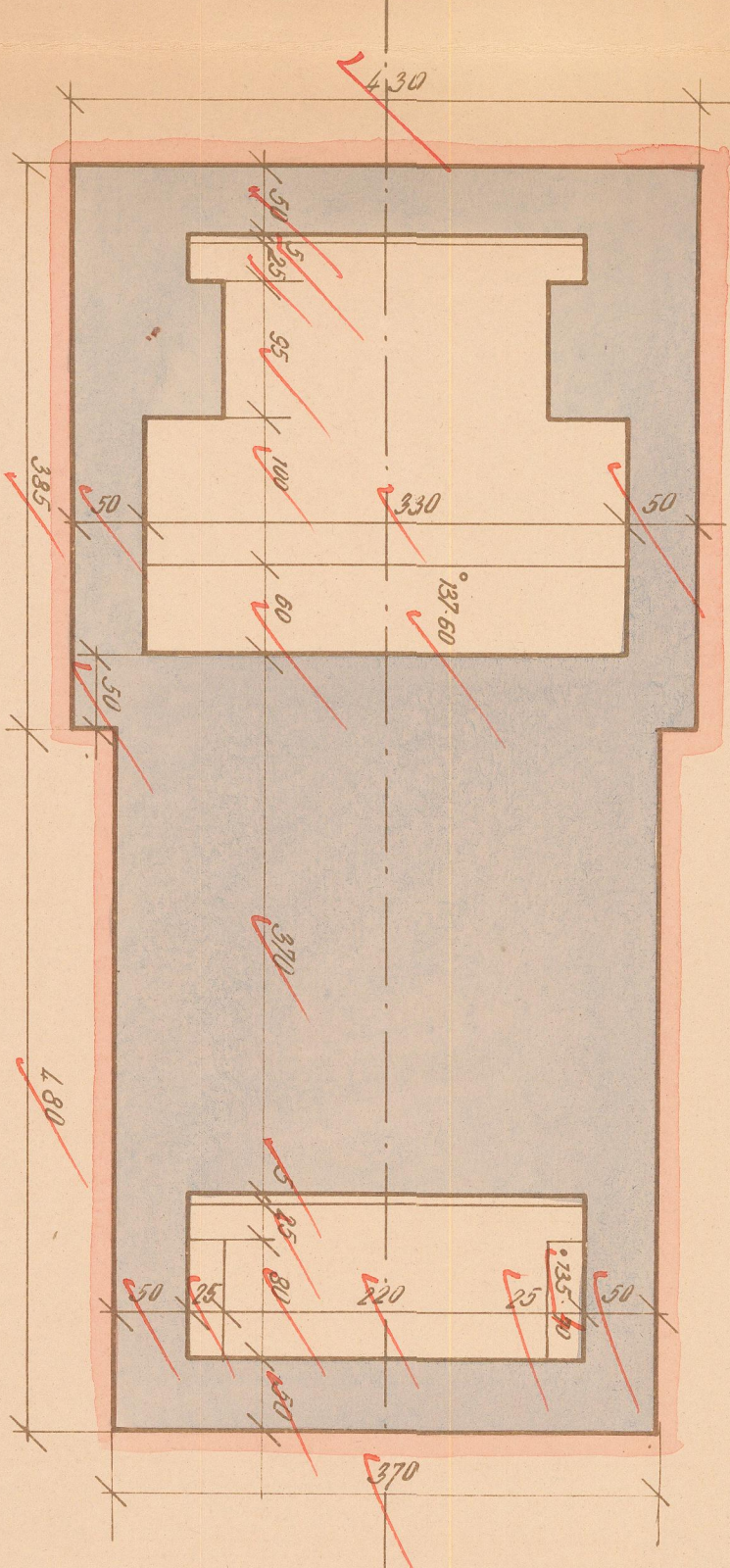


MEH. 1:50



Místní stavební správa
Městská Masarykova a Štefánikova

For more money
my. Salech.

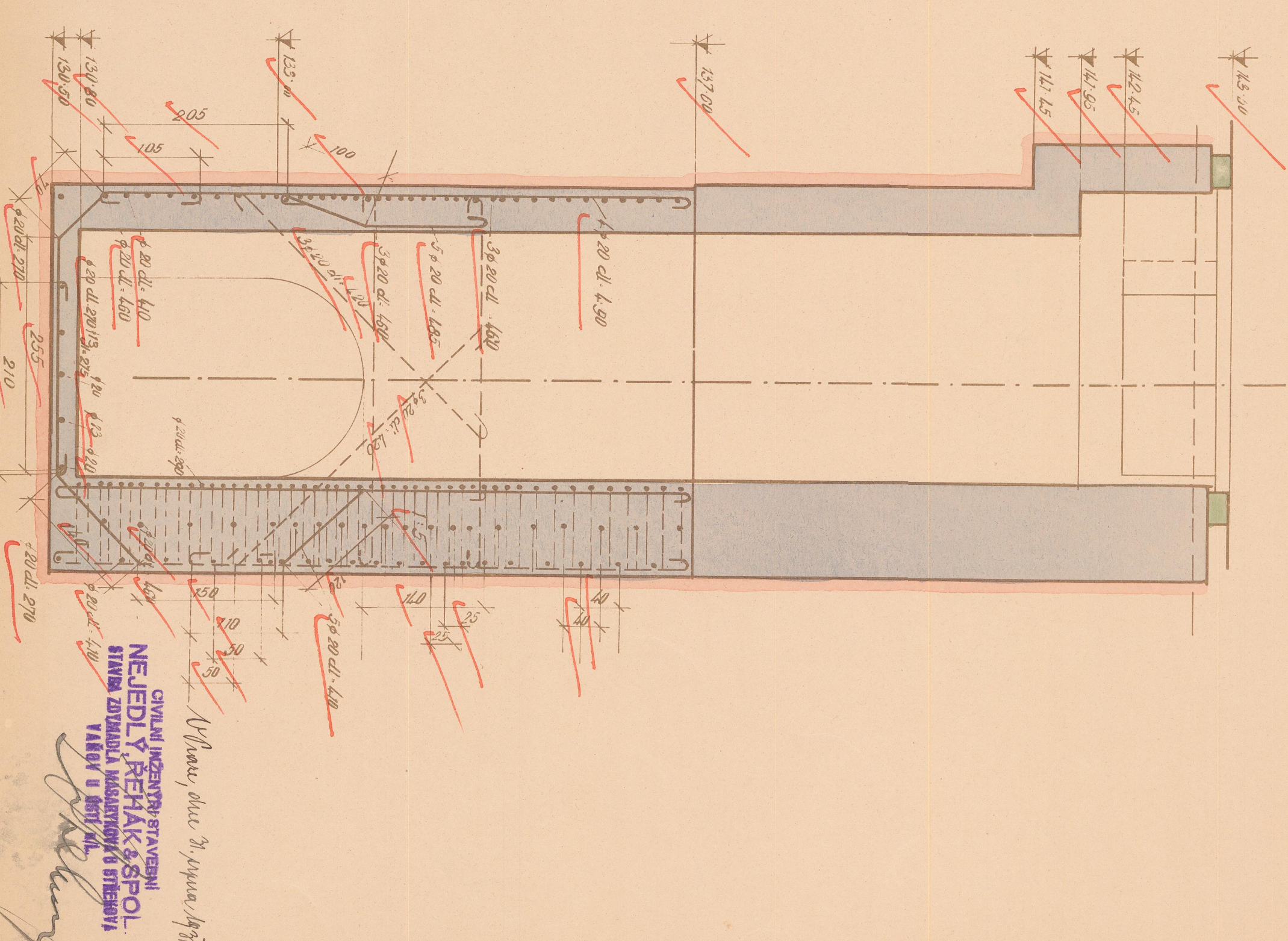


Stavební správa kanalizací sekce I. a II. bře

Práche, dne 22. listopadu 1932
Sešit stavební správy:

Sección stavební správy

John J. Colver



Worcester, Dec 21. 1831

CIVILNÍ INŽENÝR STAVEBNÍ
NEJEDLÝ ŘEHAČ & SPOL.
STAVBA ZDYMADLA MASARYKOVY A OTTERHOVA

YANOV U DIST. 1/1